

Alere iCup® Rx

Urine Drug Screen Procedure

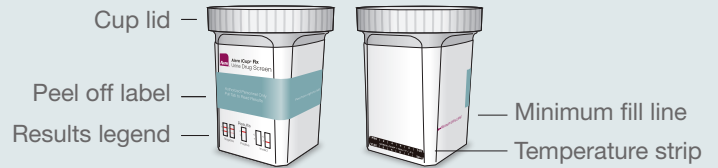
For detailed instructions, please read the package insert.

Kit Contents

- 25 Alere iCup® Rx Test Devices
- 1 Adulteration Color Comparison Chart
- 1 Instruction Insert
- 25 Security Seals

Store at 4-30°C (39-86°F) in the original sealed pouch. Do not freeze.

Cup Components



Collection and Testing Procedure

1 Collect sample and attach lid.

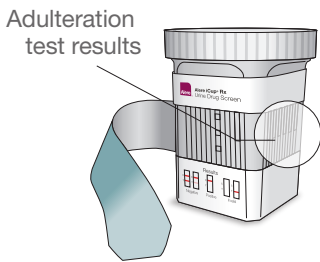


2 Verify the urine temperature is within acceptable range of 32-38°C (90-100°F).



Immediately read the temperature to verify that the urine temperature is within the acceptable range.

3 Peel back label to reveal results.



Adulteration on test result (if applicable)

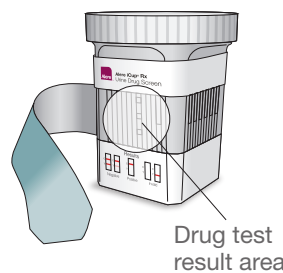
If your cup is equipped with adulterant pads, verify that pad colors are within acceptable range according to the adulteration guide.

TEST NAME ASSAY TIME	ACCEPTABLE		REJECT		REMARKS
	LOW	HIGH	LOW	HIGH	
Creatinine 45 seconds	Light Yellow	Yellow	Dark Yellow	Orange	20 or 100 mg/dL
Specific Gravity 45 seconds	Light Blue	Blue	Dark Blue	Black	1.000 - 1.030
Oxidant Bleach 30 seconds	Blue	Red	Black	None	

For illustrative purposes only. Please refer to color comparison chart included with kit.

Adulteration color chart

4 Wait 5 minutes, and read drug test result.



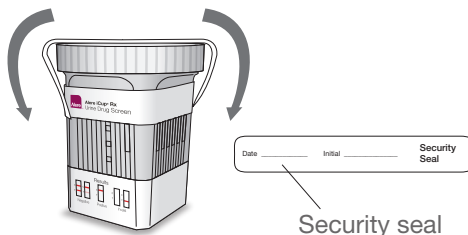
Drug test result interpretation



Laboratory Confirmation

Preliminary positive drug test results

Apply security seal to preliminary positive specimens being sent for lab confirmation.



This assay provides only a preliminary analytical test result. A more specific alternative chemical method must be used in order to obtain a confirmed analytical result. Gas chromatography-mass spectrometry (GC-MS) and liquid chromatography-tandem mass spectrometry (LC-MS/MS) are the preferred confirmatory methods. Clinical consideration and professional judgment should be applied to any drug test result, particularly when preliminary positive results are indicated.

Distributed By:
Blue Grass Drug Screen, Inc.
1-866-323-7336 Toll Free